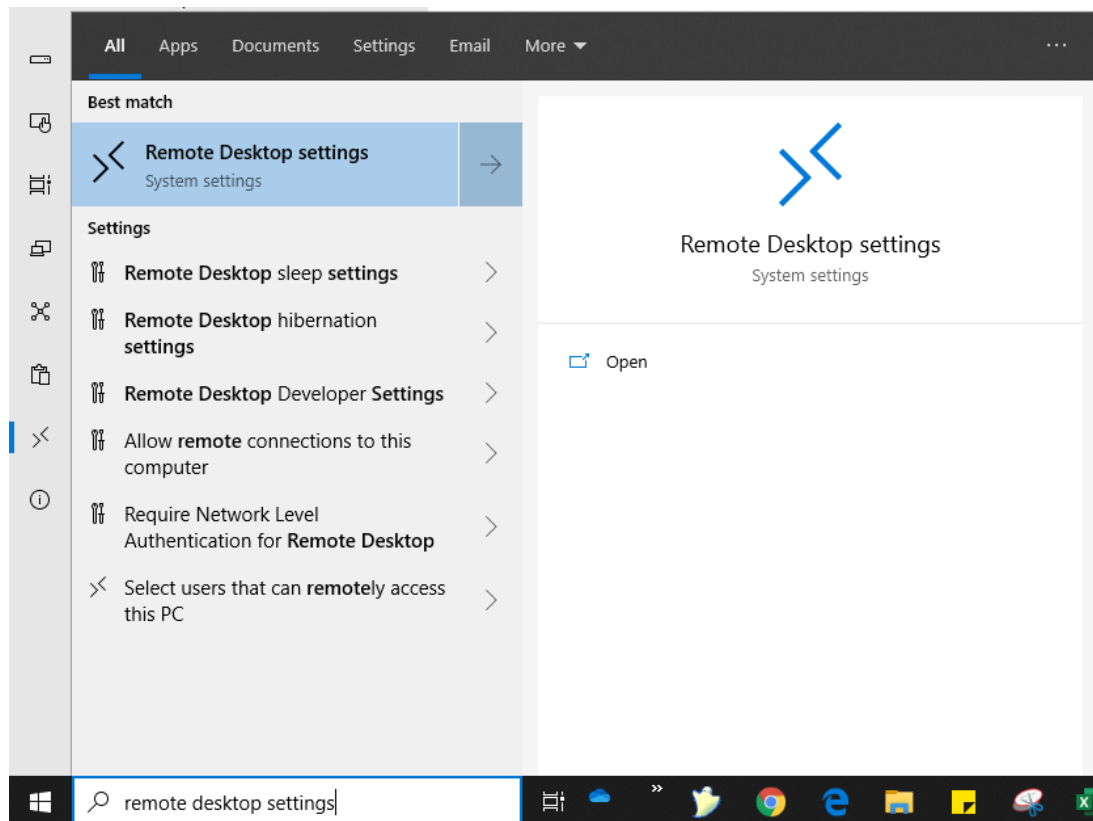


## Configuring your office pc for Remote Desktop connections instructions

To ensure you can remote desktop to your computer, you will need to make sure remote desktop is enabled on your computer and you will also need the ip address of your computer.

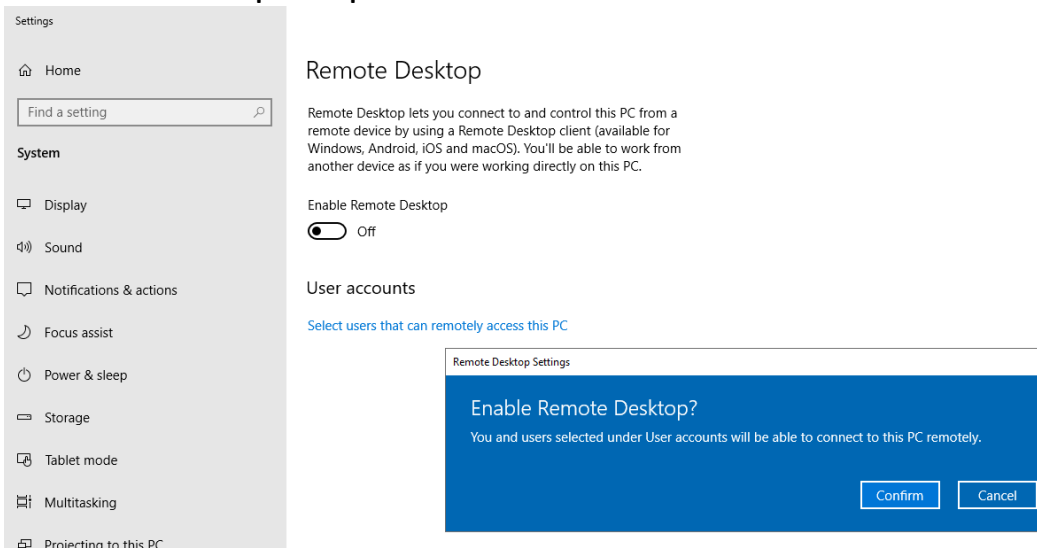
Please follow these instructions 1-7 on your office computer.

1 On your office computer that you want to remotely connect to from off campus, please click the start button, type in remote desktop settings and click open.

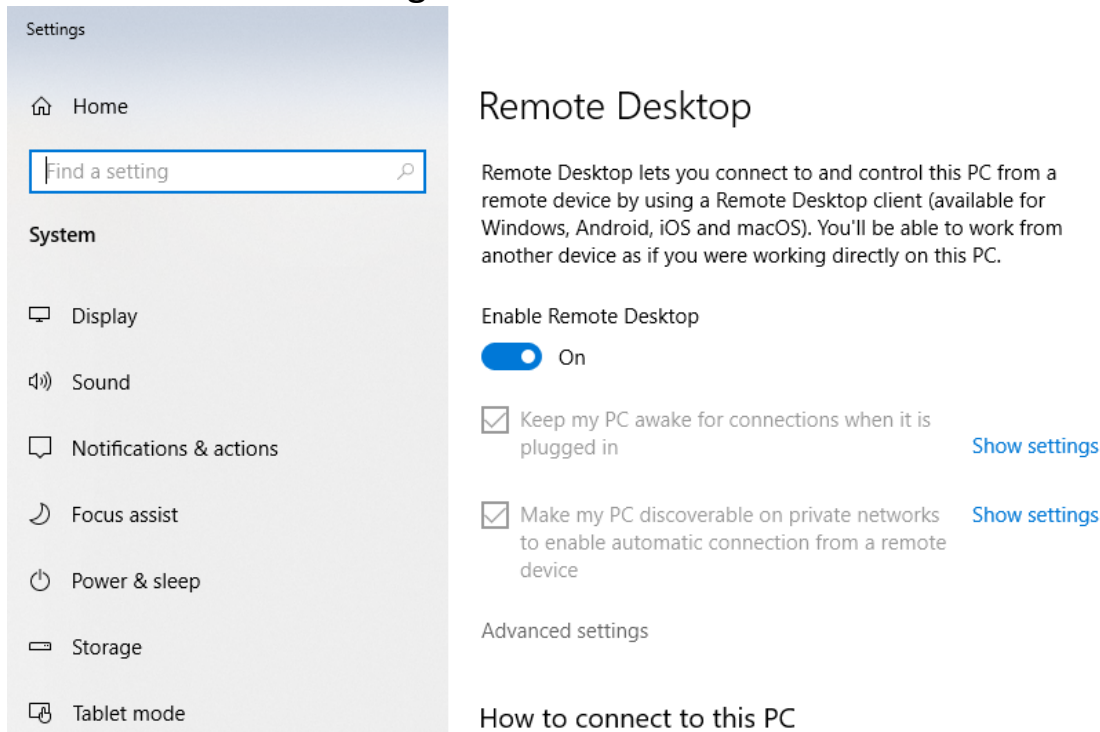


# Configuring your office pc for Remote Desktop connections instructions

2 Ensure that Enable Remote Desktop is on; if off switch to on and click confirm when prompted.



3 Click Advanced settings



# Configuring your office pc for Remote Desktop connections instructions

4 Uncheck Require computers to use Network Level Authentication, click proceed anyway and then click on the home icon on the top left.

← Settings

🏠 Advanced settings

Configure Network Level Authentication

Require computers to use Network Level Authentication to connect (recommended)

[Why allow connections only with Network Level Authentication?](#)

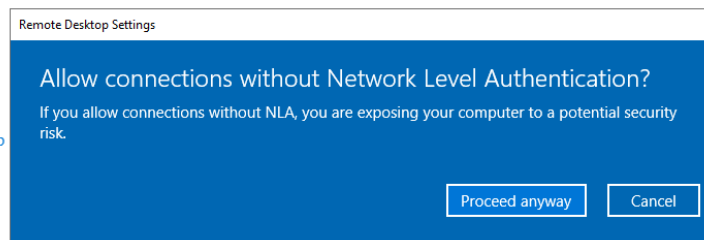
External connections

[Learn how to allow remote connections from outside your local network](#)

Remote Desktop port

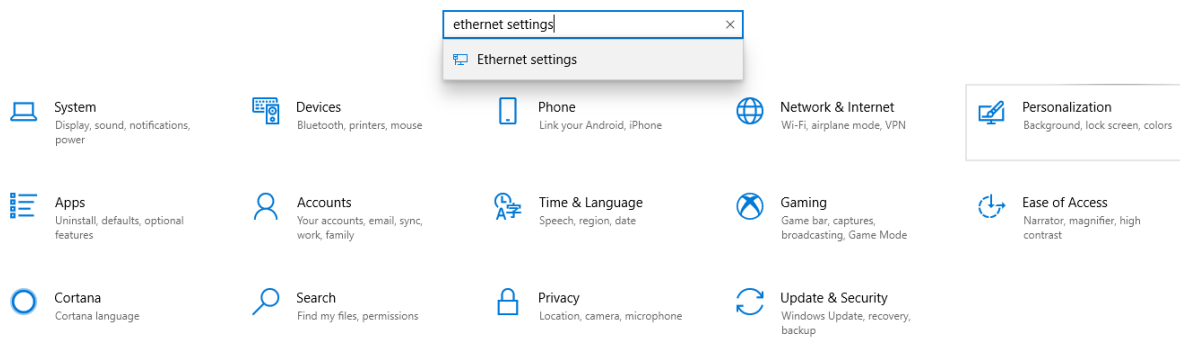
Current Remote Desktop Port 3389

[Learn how to change the listening port for Remote Desktop](#)



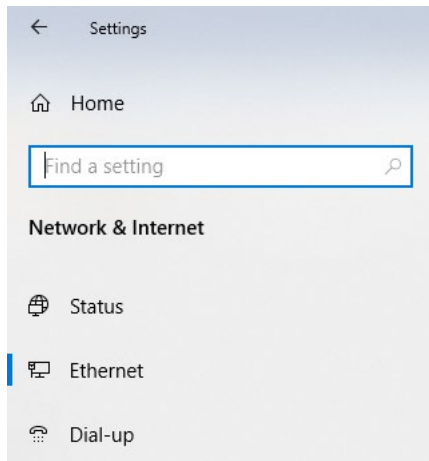
5 In the search box type in Ethernet settings and click on it

Windows Settings



# Configuring your office pc for Remote Desktop connections instructions

## 6 Click on the network connected icon



Ethernet



# Configuring your office pc for Remote Desktop connections instructions

7 Look for ip settings and take note of your ipv4 address. You can close this window after recording your ip address.

← Settings

🏠 Identifying...

## Metered connection

If you have a limited data plan and want more control over data usage, make this connection a metered network. Some apps might work differently to reduce data usage when you're connected to this network.

Set as metered connection

Off

If you set a data limit, Windows will set the metered connection setting for you to help you stay under your limit.

[Set a data limit to help control data usage on this network](#)

## IP settings

IP assignment:	Manual
IPv4 address:	100.200.250.50
IPv4 subnet prefix length:	24
IPv4 gateway:	100.200.250.2
IPv4 DNS servers:	8.8.8.8

Edit

## Properties

Link-local IPv6 address:	fe80::8de0:54a6:5c27:7ac2%11
IPv4 address:	100.200.250.50
IPv4 DNS servers:	8.8.8.8 204.235.160.250
Manufacturer:	Intel Corporation
Description:	Intel(R) Ethernet Connection (5) I219-V
Driver version:	12.17.10.8

After you have enabled remote desktop and recorded your ip address, you are now ready to connect to your pc. Please see VPN instructions to connect to your computer from off campus.

Your office computer needs to be left on in order to connect to it remotely. Please leave on but lock it. You can press, ctrl + alt + delete keys on the keyboard at the same time and click lock to lock your computer.